

TROUBLESHOOT

Problem	Cause of Issue	Solution
Appliance does not power on	The power plug is not plugged in	Check the socket with another appliance
		Plug in the power plug
		Check the main circuit breaker
	The appliance is damaged	Please contact the Service Centre
Appliance does not switch off after boiling	When used with too little or without water, the appliance has not cooled now sufficiently	Allow the appliance to cool down for 15 minutes.
	The lid it not closed properly	Close the lid properly
Appliance switches off before boiling	The appliance is damaged	Please contact the Service Centre
	The inside of the kettle is stained with excessive limestone	Descal the appliance as instructed
The display light does not light up	The appliance is damaged	Please contact the Service Centre
	The power plug is not plugged in	Plug in the power plug
	The light indicator is damaged	Please contact the Service Centre

Warranty & Customer Service

SCAN FOR



e-Warranty

e-Warranty Registration at <https://khindonline.com/login>

MAYER MALAYSIA SDN BHD

Customer Service Hotline: 1800-88-0032

Service Centre Operating Hours:

8.30am – 6.00pm (Monday - Friday)

Closed on Saturday, Sunday and Public Holidays

No. 2, Jalan Astaka U8/82, Bukit Jelutong, 40150 Shah Alam, Selangor D.E., Malaysia.

Waranti & Perkhidmatan Pelanggan

IMBAS UNTUK



E-Waranti

Pendaftaran e-Waranti di <https://khindonline.com/login>

MAYER MALAYSIA SDN BHD

Hotline Perkhidmatan Pelanggan: 1800-88-0032

Waktu Operasi Pusat Perkhidmatan:

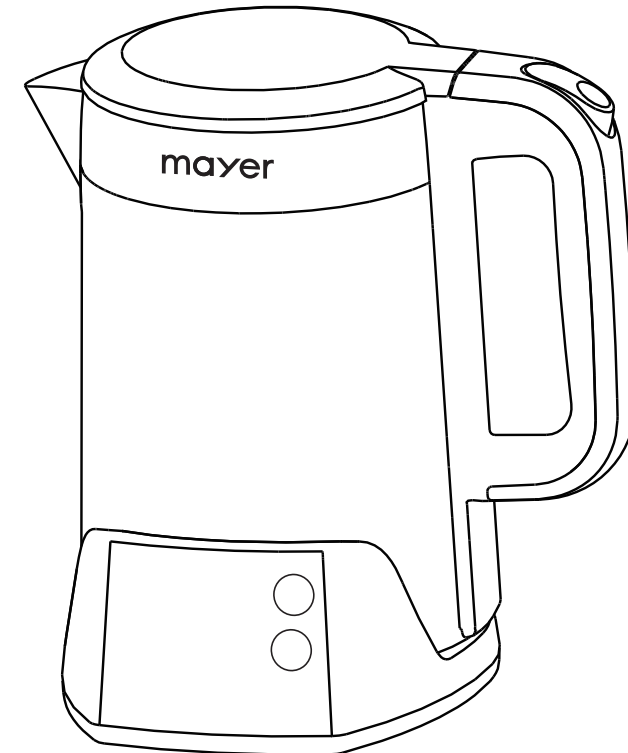
8.30am – 6.00pm (Isnin-Jumaat)

Ditutup pada hari Sabtu, Ahad dan Cuti Umum

No. 2, Jalan Astaka U8/82, Bukit Jelutong, 40150 Shah Alam, Selangor D.E., Malaysia.

mayer

Digital Electric Kettle MMEK1500D



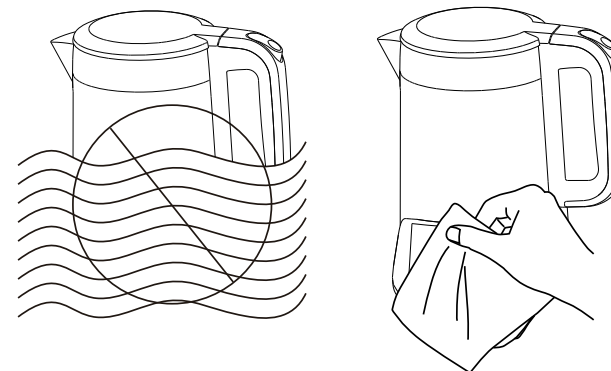
Please read this instruction manual thoroughly before operating and keep it for future reference

IMPORTANT SAFETY INSTRUCTIONS

- This appliance is intended for household use only. It is not fit for commercial use. This kettle is designed to boil water. Heating or boiling of other kinds of liquids voids the warranty.
- This appliance is not intended for use by persons (including children) with reduced physical, sensory or mental capabilities, or lack of experience and knowledge unless they have been given supervision or instruction concerning the use of the appliance by a person responsible for their safety.
- Children should be supervised to ensure that they do not play with the appliance.
- Do not operate any appliance with a damaged cord or plug or after the appliance malfunctions, or has been dropped or damaged in any manner. If the supply cord is damaged, it must be replaced by the manufacturer, its service agent or similarly qualified persons in order to avoid a hazard.
- When using electrical appliances, basic safety precautions should always be followed to reduce the risk of fire, electric shock, and/or injury.
- Do not immerse appliance, cord or plug in water or other liquid.
- Unplug from the outlet when not in use and before cleaning.
- Do not unplug the appliance by pulling on the cord.
- Use the accessories from the appliance only.
- Do not use it outdoors. Keep it away from sources of heat, direct sunlight, humidity and sharp edges. Do not use the appliance with wet hands. If the appliance is humid or wet, unplug it immediately.
- This kettle must be used with the power base provided inside the packaging.
- Warning: Avoid spilling on the power connector.
- Warning: Misuse of this appliance may cause injury.
- The heater base's surface is subject to residual heat after use. Do not touch the surface and any hot parts of the appliance during use or immediately after use. It will be very hot!
- If the kettle is overfilled, boiling water may be ejected.
- During operation and afterwards, the temperature of the accessible surfaces will be hot.
- Always hold the appliance by the handle. Even after use, the surface of the heating element still has residual heat.
- Do not exceed the MAX mark when filling, the water may boil over and cause burns!
- Always ensure that the lid is tightly closed.
- Do not open the lid when the water is boiling.
- Do not dry boil the kettle.
- Use the appliance only on a level work surface.
- Do not move the appliance and do not touch it when it is working.
- Before inserting the plug into the socket, make sure that the mains voltage to be used matches that of the appliance. You can find this information on the rating label.

CLEANING AND MAINTENANCE

- Always switch off the appliance before removing it from the base. Ensure that the appliance is switched off when you set it back onto the base.
- Keep the lid closed when pouring the water out.
- During operation the kettle body becomes hot. Do not touch it and allow the appliance to cool down before storing it away.
- If the appliance is not used for a long time, boil fresh water to the MAX mark 3 - 4 times and pour the water away.
- Always turn the appliance off before cleaning it and unplug it from the main plug. Wait until the appliance has cooled down.
- Never immerse the appliance or the base into water or other liquids, this might result in an electric shock or fire.
- Do not use any wire brush or other abrasive objects.
- Do not use any acidic or abrasive detergents.
- Clean the perforated area in the spout with a nylon brush from the inside.
- Rinse the water container out with clean water. Then dry it off with a cloth.
- Clean the housing after use with a slightly damp cloth.



Descaling

- Regular descaling is necessary to ensure a long life for your kettle.
- The frequency of the descaling operation depends on the hardness of the water and how often the appliance is used. If the tap water is used, it is best to descale it after 8-10 boils.
- Put a small amount of vinegar or commercially available descaling agent and water, switch the appliance on and boil for 1-3 minutes to descale.
- After descaling the appliance, boil fresh water two to three more times to remove any residues. Do not consume this water.

Temperature Select

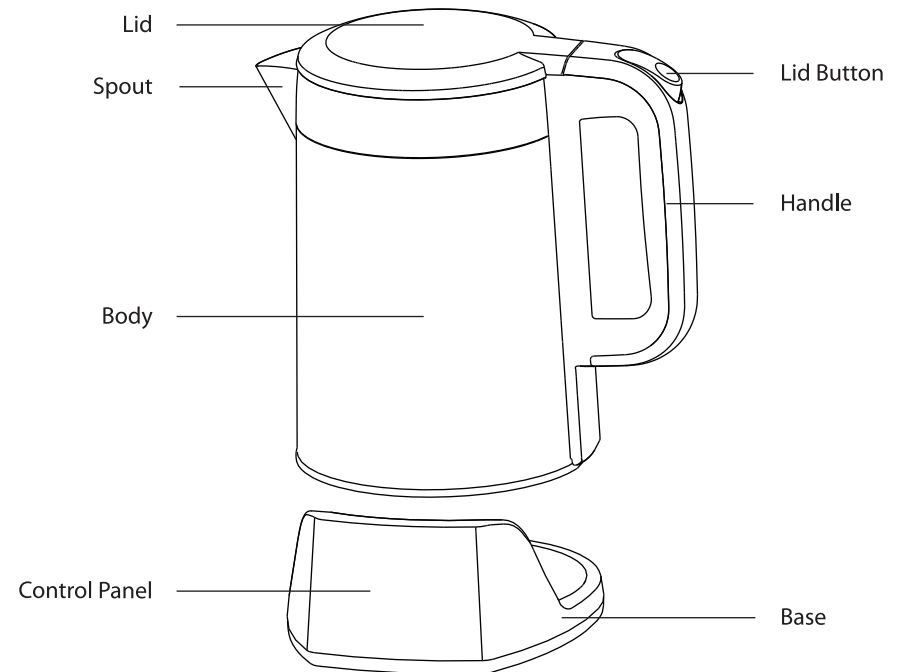
- There are 5 selections of water temperatures in this appliance.

Selection	Temperature	Description
Milk	45°C	<ul style="list-style-type: none"> • Press the "Select" key until the "Milk 45" light flashes 3 times, the appliance starts heating. • After the water reaches 45, the appliance stops heating. • Dispense 45 water to mix with milk powder to make milk.
Honey	55°C	<ul style="list-style-type: none"> • Press the "Select" key until the "Honey 55" light flashes 3 times, the appliance starts heating. • After the water reaches 55, the appliance stops heating. • Dispense 55 water to mix with honey to make honey water.
Tea	80°C	<ul style="list-style-type: none"> • Press the "Select" key until the "Tea 80" light flashes 3 times, the appliance starts heating. • After the water reaches 80, the appliance stops heating. • Dispense 80° water to mix with green tea leaves to brew tea.
Coffee	90°C	<ul style="list-style-type: none"> • Press the "Select" key until the "Coffee 90" light flashes 3 times, the appliance starts heating. • After the water reaches 90, the appliance stops heating. • Dispense 90 water to mix with ground coffee powder or instant coffee powder to brew coffee.
Boil	100°C	<ul style="list-style-type: none"> • Press the "Boil/Stop" key, "Boil 100" light flashes 3 times, the appliance starts heating. • After the water is boiled, the appliance stops heating, the "Boil 100" light turns off. • Water is ready to serve at any time.

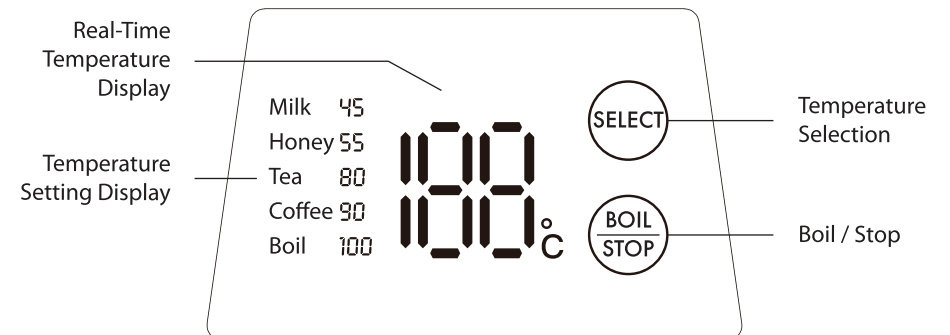
PRODUCT TECHNICAL PARAMETERS

MODEL	RATED VOLTAGE	RATED POWER	GROSS CAPACITY
MMEK1500D	220-240~50/60Hz	1500W	1.5L

INTRODUCTION OF PARTS



Control Panel



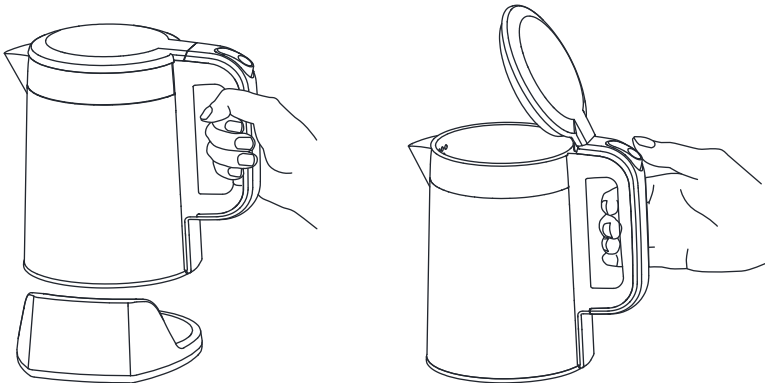
CONTROLS AND OPERATIONS

Before use

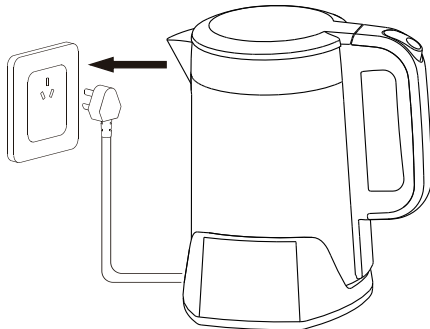
- Carefully unwind the power cord from the bottom section of the base. Please ensure that the power cord does not become tangled up.
- Check the electrical voltage is the same as the appliance. Details are on the label on the base.
- Never fill water above the MAX level.
- Before using for the first time, fill water to "MAX" level, boil water and dispense away, repeat this two times to remove possible odor.
- DO NOT touch kettle body to avoid scald when it is working.

How to use

1. Remove the kettle from the base to fill water.
2. Press the button to open the lid and fill in the amount of water between the "MAX" and "MIN" level.



3. Close the lid, place the kettle back on the base. Connect the appliance to the power supply. There will be a beep sound and the LED display will light up when switched on.



4. Select your desired temperature settings to heat up/ boil water. Refer to Heating water / keep warm setting for more information.

Heating water / keep warm setting

Boil water only without keep warm function

- Press the "BOIL/STOP" button, there is a "beep" sound after the indicator flashes 3 times.
- The kettle starts heating and shuts off and switches to standby mode after water is boiled.

Boil water and keep warm at desired temperature

- Press the "BOIL/STOP" button, and press "Select" to select your desired temperature setting.
- There is a "beep" sound after the indicator flashes 3 times, the kettle starts heating and stops after water is boiled.
- The appliance is now on keep warm mode to the set temperature.

Heat water to desired temperature (without boiling) and keep warm

- Press the "Select" button to select your desired temperature setting.
- There is a "beep" sound after the indicator flashes 3 times.
- The kettle starts heating until the water reaches desired temperature setting and stays at keep warm mode. See the table on Pg. 5.

Stop heating / keep warm

- Whether the appliance is heating or in keep warm mode, you can switch the appliance to standby mode by pressing the "BOIL/STOP" button.
- The appliance will automatically switch to keep warm mode for 6 hours once the desired temperature is reached. However, as the power is still switched on, hence if you want to change to other temperatures, push the "Select" button to select the desired temperature setting, or press the "BOIL/STOP" button to boil the water to 100°C.

Keep warm timing

Selection	Keep warm time
Milk	6 hours
Honey	
Tea	
Coffee	

Note

- If your local water is hard and the filtering appliance is limited, it is strongly advised to leave a little water inside the appliance for about 1 hour each time after boiled. This will protect the appliance for longer life.